

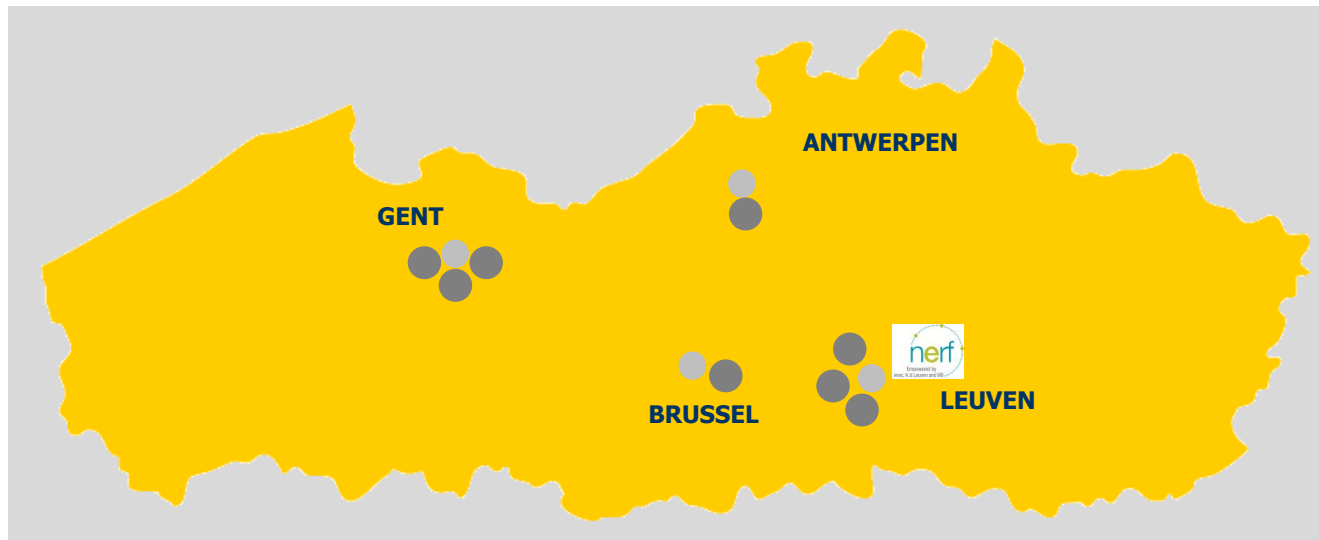
VIB Core Facilities in a Nutshell


Geert Van Minnebruggen, Ph.D – Integration Manager

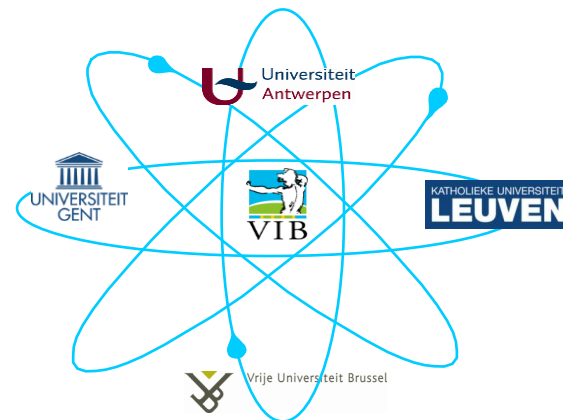


VIB ...an institute without walls

'VIB – structure'



- 8 departments + 
- **7 (8) institutional core facilities**
- ± 75 research groups
- ± 1300 co-workers
- ± 400 PhD-students
- ± 250 postdocs



VIB ...a centre of excellence

'VIB - Mission/KPI's'

- **Frontline biomolecular Research (+training)**
 - 60 papers top journals
 - 180 papers HR journals
 - 50 PhD's
- **Technology Transfer**
 - 25 patent applications
 - 7M€ industrial income
 - start-up
- **Public Outreach**

Core Facilities ...a key asset

'VIB - Institutional Core Facilities'



- Centralized/decentralized mgnt model (Head of Core Facilities)
- Users: VIB – academic - profit
- Fee for service (marginal/competitive pricing)
- All-in service: From design till data
- Subject to expert reviews every 3 years

Core Facilities ...a key asset

'Centralized – Decentralized management model'

Geert Van Minnebruggen

Head Core Facilities

Peter Verhasselt

Head Nucleomics core

Herwig Van Marck

Head BioInformatics Training and Service Facility

Jurgen Haustraete

Head Protein Service Facility

Dominique Audenaert

Head Compound Screening Facility

Reza Gassabeh

Head Nanobody Service Facility

Kris Gevaert

Head Proteomics Expertise Center

Chris Guérin

Head Ghent platform Bio Imaging Core

Sebastian Munck

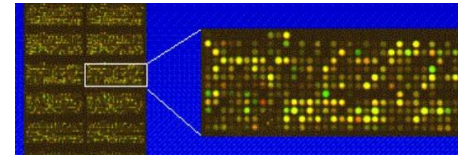
Head Leuven platform Bio Imaging Core

Alex Botzki

Lab Informatics Expert

Nucleomics core

- Located in Leuven - UZ Gasthuisberg, O&N4
- Managed by Peter Verhasselt
- Team: 8 FTE's
- Services:
 - Affymetrix & Agilent chips
 - NanoString nCounter
 - 454 GS-FLX/Junior
 - Illumina Myseq
 - Ion-Torrent PGM
 - Library prep (SPRI works; Apollo 324, Nextera (XT))
 - Lease mode access to emerging platforms
 - Access to Illumina HiSeq2000; PacBio
- Advice in experimental set-up and data-analysis
- Bioinformatics support



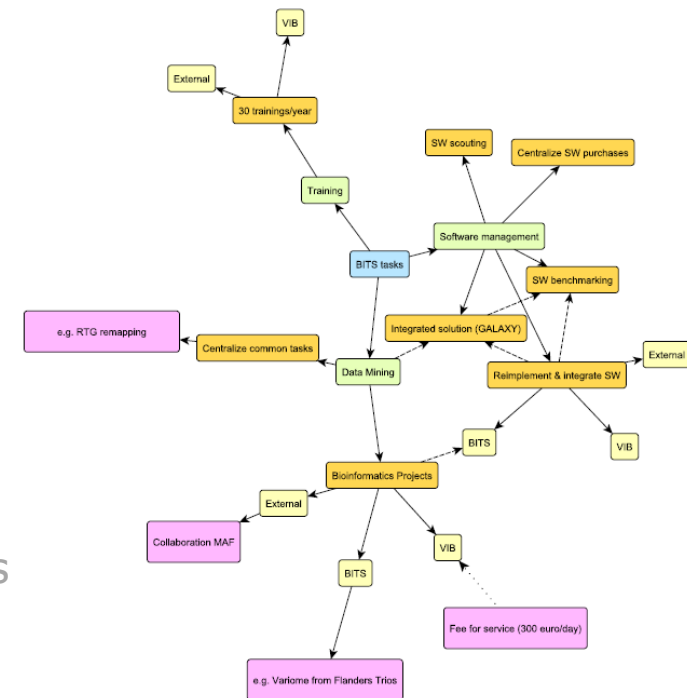
illumina

ion torrent
 ☆ ★ ▲ ○ × □ + ∞

Roche

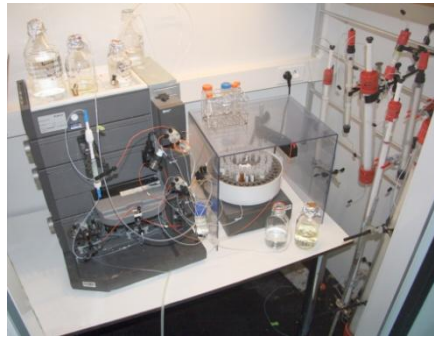
BioInformatics Training and Service Facility

- Located in Ghent - VIB HQ
- Managed by Herwig Van Marck
- Team: 4 FTE's
- Services:
 - Bioinformatics training
(IPA; CLC Bio, CG, Ariadne; EnSEMBL..)
 - Software management/benchmarking
(CLC Bio; RT-G; Spotfire;..)
 - Data mining
 - Projects, e.g. 100 Genomes; Flanders Trio's
 - Galaxy



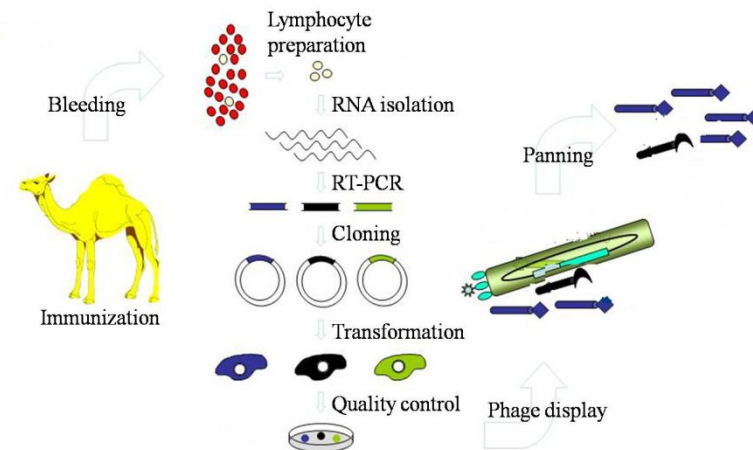
Protein Service Facility

- Located in Ghent – department Molecular Biomolecular Research
- Managed by Jurgen Haestraete
- Team: 4 FTE's
- Services:
 - Production & purification recombinant proteins
 - Fastscreen: expression vector optimization
 - Fastfold: recovery of proteins from inclusion bodies
 - Fastclear: optimization of purification



Nanobody Service Facility

- Located in Brussels – department Molecular and Cellular Interactions
- Managed by Reza Ghassabeh
- Team: 3 FTE's
- Services offered:
 - Nanobodies (Nbs) for a given antigen
 - Engineered Nbs (tags, bivalent nanobodies, ...)



Compound Screening Facility

- Located in Ghent – department Plant Systems Biology
- Managed by Dominique Audenaert
- Team: 3 FTE's
- Provides (VIB) researchers access to high-throughput small molecules and (siRNA) screenings and libraries
- Services:
 - Assay development/validation + high-throughput small molecule/RNAi screens
 - Post-screen validations



Proteomics Expertise Center

- Located in Ghent, Rommelaere Institute
- Managed by Kris Gevaert
- Team: 2 FTE's
- Services:
 - Targeted/high-throughput proteomics (3 Orbitrap, Q-ToF, Maldi-MS/MS, ion-trap;..)

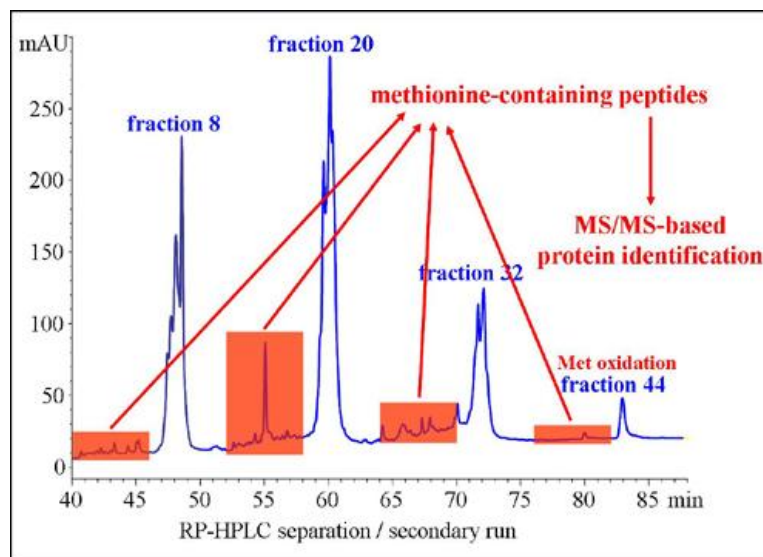
COFRADIC

Phosphoproteomics

SRM

Label-free analyses

...



Bio Imaging Core

- Two platform sites - Ghent respectively Leuven
- Managed by Chris Guérin (Ghent) respectively Sebastian Munck (Leuven)
- Team: 8 FTE's
- Services:
 - Conventional Light & super resolution Microscopy
 - SEM/TEM (including tomography)
 - Serial Block Face SEM (i.e. Gatan 3View and FIB)
 - Development 3D Correlative Light Electron Microscopy (3D-CLEM)





Lab Informatics Expert

- VIB HQ
- Alex Botzki
- Expertises:
 - ELN
 - OMERO
 - LIMS

